



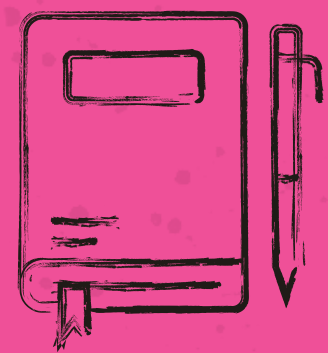
YPIP

TIPS & TROUBLESHOOTING

WHAT IF I GET STUCK?

Writer's block is real!

If you find yourself uninspired, unsure where to go with the play next, or uninterested in continuing, THIS IS NORMAL! There are many things you can do to get your brain going again!



JOURNAL

Let the internal conversation out on the page, write down all the questions you have, and what you already know.



TALK

Have a conversation with a trusted friend or adult about your frustration.



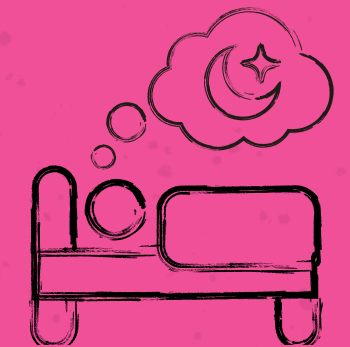
CRAFT

Take in another type of art - a book, a painting, music.



WALK

Take a walk - go outside!



REST

Allow yourself rest. Sometimes you just have to shut it all down!

TRUST THE PROCESS

- Let the rough draft be rough! Fix it later!
- Get feedback for your work. What makes sense to your readers? What needs more?
- Read aloud as you go. Ask trusted friends to read with you!
- Write over time – do not try to write the whole play at once!

SUBMISSION GUIDELINES

A final reminder of the criteria for participating in YPiP!

- YPiP celebrates the art of the short play. Submitted plays must be no more than 2000 words in total (including title and stage directions). This should be about 10 (ten) double-spaced pages, or about 10 (ten) minutes of performance time.
- Plays must have no more than 4 (four) characters, and no narrators.
- Do not put your name, school, or teacher's name on the script. There should be no identifying information on the script itself.
- Plays must be original works. No adaptations of other stories, television shows, plays, musicals, or movies.
- Students must be enrolled full-time in middle school, high school, or home school in grades 6-12 in the state of Indiana.
- Only one playwright per script submission.
- Students may submit up to a total of three short plays per student.
- The YPiP entry form must be completed with each submission.
- Students must be available to attend the Finalist Weekend.

Please direct any questions to **education@irtlive.com**.